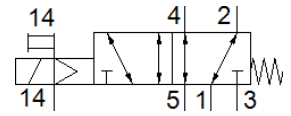
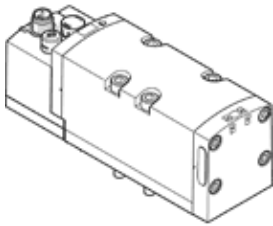


# solenoid valve

## VSVA-B-M52-MZD-D2-1R5L

Part number: 567004

FESTO



## Data sheet

| Feature                                     | Value   |
|---|---|
| Valve function                              | 5/2 monostable  |
| Type of actuation                           | electrical  |
| Width                                       | 52 mm   |
| Standard nominal flow rate                  | 2,800 l/min   |
| Operating pressure                          | -0.9 ... 16 bar   |
| Design structure                            | Piston slide  |
| Type of reset                               | mechanical spring   |
| Authorisation                               | C-Tick<br>c CSA us (OL)<br>c UL us - Recognized (OL)                        |
| KC mark                                     | KC-EMV  |
| CE mark (see declaration of conformity)     | to EU directive for EMC   |
| Protection class                            | IP65<br>NEMA 4  |
| Nominal size                                | 15 mm   |
| Grid dimension                              | 59 mm   |
| Exhaust-air function                        | throttleable<br>Via throttle plate<br>Via individual sub-base               |
| Sealing principle                           | soft  |
| Assembly position                           | Any   |
| Conforms to standard                        | ISO 5599-1  |
| Manual override                             | detenting<br>Pushing  |
| Type of piloting                            | Piloted   |
| Pilot air supply                            | external  |
| Flow direction                              | Any   |
| Overlap                                     | Positive overlap  |
| Signal status display                       | LED   |
| Pilot pressure                              | 3 ... 10 bar  |
| Flow rate of valve                          | 4,000 l/min   |
| Flow rate of valve on individual sub-base   | 2,400 l/min   |
| Flow rate of pneumatically linked valve     | 2,800 l/min   |
| Switching time off                          | 60 ms   |
| Switching time on                           | 20 ms   |
| Duty cycle                                  | 100 %   |
| Max. positive test pulse with logic 0       | 1,000 µs  |
| Max. negative test pulse with logic 1       | 3,500 µs  |
| Nominal breakaway current per solenoid coil | 165 mA up to 30 ms  |
| Nominal current with current reduction      | 35 mA after 30 ms   |
| Characteristic coil data                    | 24 V DC: 4.6 W  |
| Permissible voltage fluctuation             | +/- 10 %  |
| Operating medium                            | Compressed air in accordance with ISO8573-1:2010 [7:4:4]                    |
| Note on operating and pilot medium          | Lubricated operation possible (subsequently required for further operation) |

| Feature                                 | Value  |
|---|--|
| Vibration resistance                    | Transport application test at severity level 2 in accordance with FN 942017-4 and EN 60068-2-6 |
| Shock resistance                        | Shock test with severity level 2 in accordance with FN 942017-5 and EN 60068-2-27              |
| Corrosion resistance classification CRC | 0 - No corrosion stress  |
| Medium temperature                      | -5 ... 50 °C   |
| Relative air humidity                   | 0 - 90 %   |
| Pilot medium                            | Compressed air in accordance with ISO8573-1:2010 [7:4:4]                                       |
| Ambient temperature                     | -5 ... 50 °C   |
| Product weight                          | 702 g  |
| Electrical connection                   | Central plug<br>Round design<br>M12x1<br>3-pin   |
| Mounting type                           | On sub-base  |
| Auxiliary pilot air port 12/14          | Connection plate size 2 as per ISO 5599-1  |
| Pilot exhaust port 82/84                | Optional<br>Not ducted as per standard<br>Ducted   |
| Pneumatic connection, port 1            | Connection plate size 2 as per ISO 5599-1  |
| Pneumatic connection, port 2            | Connection plate size 2 as per ISO 5599-1  |
| Pneumatic connection, port 3            | Connection plate size 2 as per ISO 5599-1  |
| Pneumatic connection, port 4            | Connection plate size 2 as per ISO 5599-1  |
| Pneumatic connection, port 5            | Connection plate size 2 as per ISO 5599-1  |
| Materials note                          | Conforms to RoHS   |
| Material seals                          | FPM<br>HNBR<br>NBR   |
| Material housing                        | Aluminium die cast<br>PA   |
| Material screws                         | Steel<br>Galvanised  |